

INTRODUCTION

- Rural caregivers of people living with dementia often face geographical barriers to access services, stigma, and lack of localized supports from other caregivers
- Needs for flexible support within a dementia-friendly community

METHODS

1. A Virtual Dementia Friendly Community cluster trial across 12 Australian rural communities in 2017-19 with 113 participants (37 providers, 39 volunteers, 37 carers)
2. Verily Connect web app was evaluated using Consolidated Framework of Implementation Research (Damschroder et al, 2009)

RESULTS

	Pre		Post		Change score (pre-post)			P value	effect size
	N	Mean (SD)	N	Mean (SD)	N (Pair)	Mean (SD)	95% Confidence Interval		
Overall social support (MOS-SSS)	27	40.88 (27.86)	19	58.37 (29.72)	18	-15.12 (16.69)	(-23.42, -6.82)	0.001	0.906
Caregiver burden (Zarit)	28	67.75 (12.02)	16	62.28 (8.21)	16	5.28 (12.34)	(-1.30, 11.85)	0.108	0.428

DISCUSSION

- COVID-19 promotes wider acceptance of technology and reduce digital divide
- Hybrid online/face-to-face support programs specifically designed for older adults, so that older adults have equitable opportunities to access technological innovations

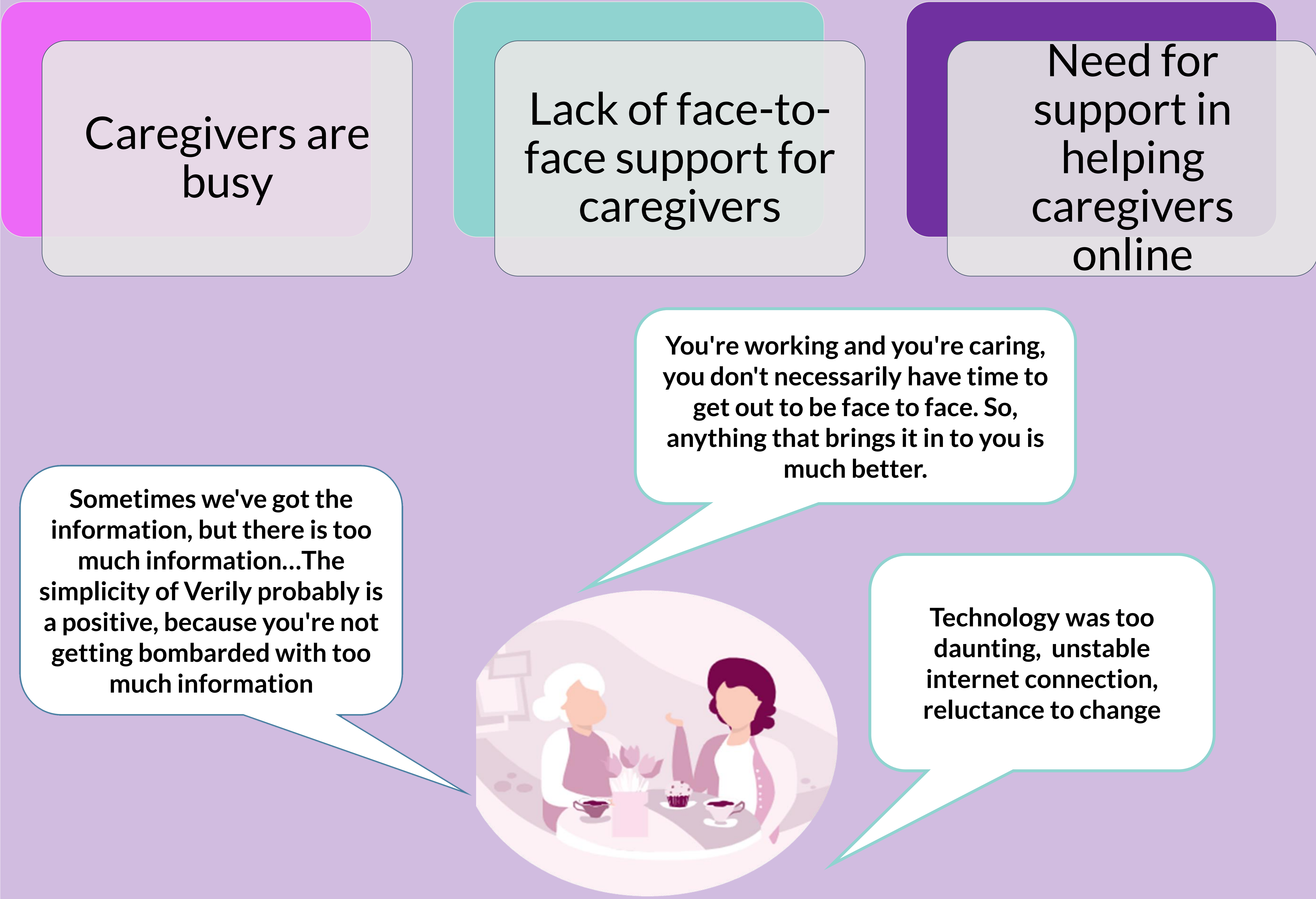
FINANCIAL DISCLOSURE

- Commonwealth Australia Dementia and Aged Care Services Grant

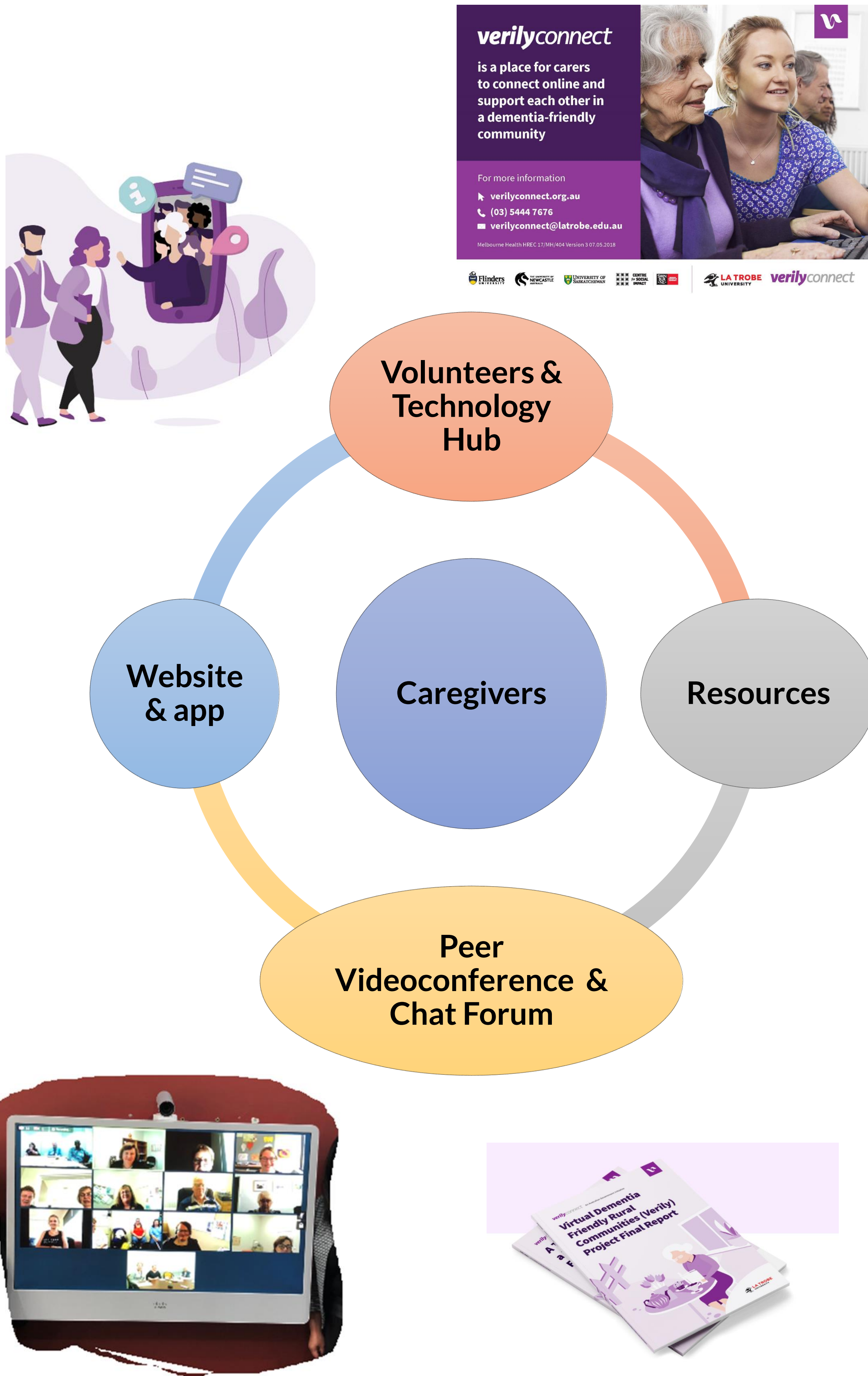
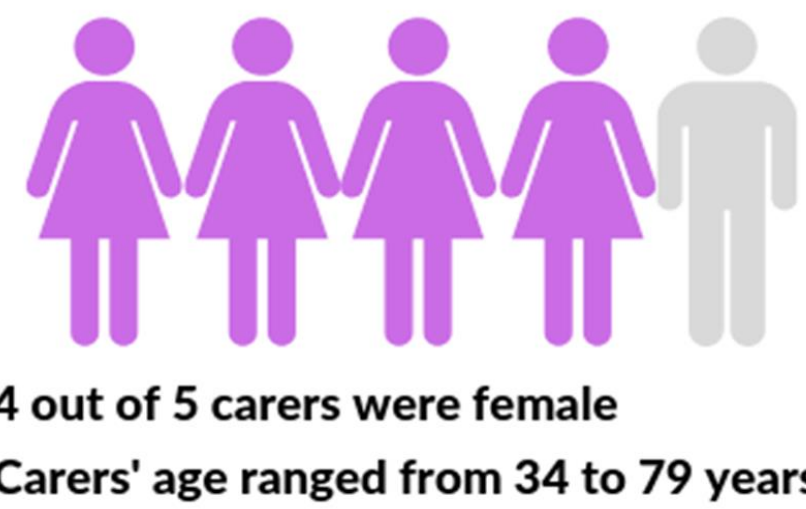


IT is not for me: Why age matters in technological innovation

Irene Blackberry, Clare Wilding on behalf of the Verily Connect Team



GSA 2020 ANNUAL
SCIENTIFIC MEETING
ONLINE
Turning 75: Why Age Matters



i.blackberry@latrobe.edu.au



www.verilyconnect.org.au